

# Product specifications



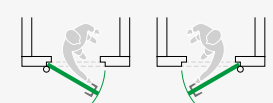
## AXA TITAN® SAFETY HINGES

Applicable to outward turning exterior doors and windows

Dimensions	Bearings	Material/Finish	Recommended screws	Article number
89 x 89 mm	AXApom - Steel	Steel, Topcoat®	4,5 x 45 mm	1711-09-23/VE
89 x 89 mm	AXApom - Steel	Steel, Topcoat®	4,5 x 45 mm	1711-09-23/7V*

\* separated hinge leafs

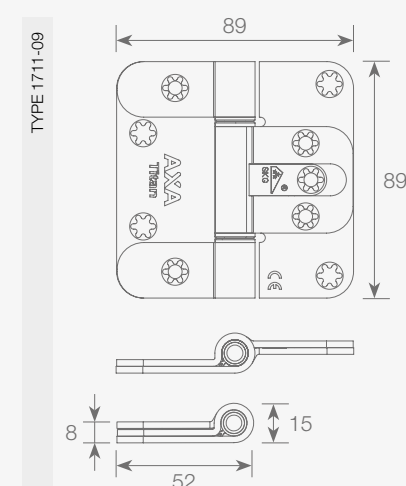
Applicable directions of rotation



Load table

Number of hinges	Max load (in kg)
2 pieces	120
3 pieces	180

Product dimensions



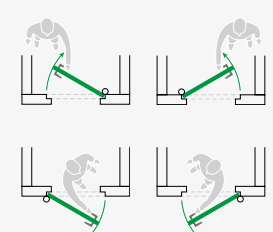
## AXA TITAN® HINGES

Applicable to inward turning exterior doors and windows, inner doors

Dimensions	Bearings	Material/Finish	Recommend screws	Article numbers
89 x 89 mm	AXApom - Steel	Steel, Topcoat®	4,5 x 45 mm	1701-09-23/E
89 x 89 mm	AXApom - Steel	Steel, Topcoat®	4,5 x 45 mm	1701-09-23/7*

\* Separated hinge leafs

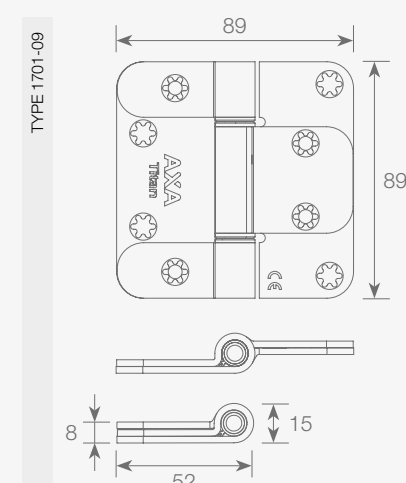
Applicable directions of rotation



Load table

Number of hinges	Max load (in kg)
2 pieces	120
3 pieces	180

Product dimensions



# AXA HOME SECURITY

## AXA keeps you safe

AXA supplies a wide range of quality products that meet high sustainability requirements. AXA develops products that put the consumer's ease of use first and that also offer innovative solutions for reducing installation time. With our own development department and production facilities in the Netherlands and Poland, we are able to respond to market demands quickly and develop smart solutions. For more than 115 years now, AXA has been a household name as a supplier of locks and hinges, and has been part of Allegion since 2015.

For more information, visit: [axahomesecurity.com](http://axahomesecurity.com)

### AXA IS PART OF ALLEGION™

Allegion (NYSE: ALLE) is an international pioneer in safety and security. We help keep people safe and secure where they live, work and visit. Allegion is a leading supplier of security products with a turnover of \$ 2 billion and sales in more than 130 countries worldwide. AXA is a subsidiary of the Allegion group, and with more than 25 leading brands, it offers you access to a wide range of high quality and innovative security solutions for doors and windows.

For more information, visit [allegion.com](http://allegion.com)



## You are most welcome!

If you would like to arrange an appointment with one of our advisors, call: **+31 (0)318 - 536 111**

AXA Stenman Nederland B.V.  
Energistraat 2, NL-3903 AV Veenendaal

© 2019 Edition: 04/2019



# AXA HOME SECURITY

## AXA Titan® Hinges

APPLICABLE TO DOORS AND WINDOWS





## We did think about everything

The AXA Titan has been developed in consultation with the carpentry industry and is characterised by the time saved during the preparation of the door and frame, because only 3 hinges are needed.

### LOW MAINTENANCE

By using the unique bearing combination, the hinge is low-maintenance. The steel hinge is galvanised and treated with Topcoat®, making it resistant to weathering.

As there is no need for a recess for an anti-theft pin, there is less chance of dirt and moisture accumulation, meaning a longer product lifetime can be expected.

### NO ANTI THEFT PIN NEEDED

By omitting the anti-theft pin, time gains arise when preparing the frame. For example, there is no need to make a recess in the frame for an anti-theft pin. Due to the absence of this recess, lacquering is easier and wood rot is prevented.

### EXCHANGEABLE

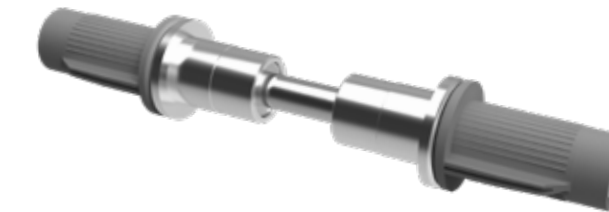
The total thickness of the AXA Titan is 8 mm, making it fit in the same infill as an 89 x 89 x 3 mm hinge.

### PERFORMANCE NEN-EN 1935 & NEN 5096

Safety hinges meet the CE requirements according to NEN-EN 1935 and are SKG\*\*\* certified in combination with resistance class 3 (WK3) in accordance with the requirements of NEN 5096 of the Building Decree for doors.

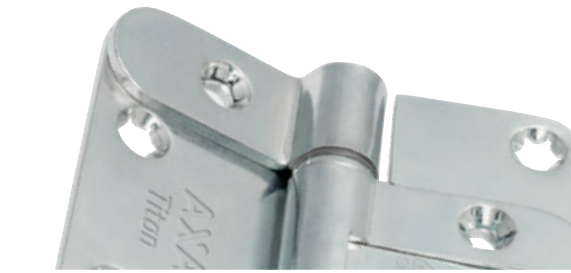


UNIQUE PATENTED LOCKING SYSTEM



BEARING COMBINATION OF METAL AND PLASTIC

## Smartly designed for every application



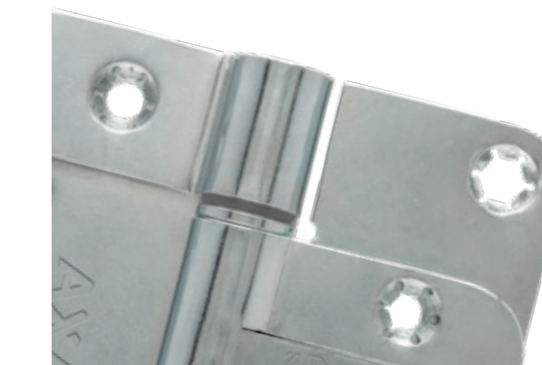
### DOUBLE ROLLING

The AXA Titan is provided with a double rolling, which means that the material is twice as thick locally! In combination with the closed rolling, the load capacity has increased to 180 kg with 3 hinges!



### LOCKING SYSTEM

The patented locking system has acquired an SKG\*\*\* certification with only 3 instead of 5 hinges. In the AXA Titan, the hinge pin is secured by a unique sliding system. This replaces the function of the well-known anti-theft pin. The sliding system is secured with only one additional screw. Which has a positive contribution to the load capacity.



### BEARINGS

The AXA Titan uses both steel and plastic bearings. The combination of 2 different materials prevents cracking and abrasive noises. The plastic bearings are made of high quality AXApom, which ensures that the bearings run smoothly and silently. The plastic bearings are specially designed and extra long, so the bearings stay in place.



### HINGE PIN

The hinge pin no longer has a head, so that it can be inserted in either end. The hinge pin is 8 mm thick, making it well resistant to the torsion forces that can arise.



### DESIGN

The AXA Titan is a 3 knuckle hinge without an hinge pin head, giving an aesthetically pleasing appearance in open and closed situation of the door because no recess is needed for the anti-theft pin.

**AXA**

AXA TITAN HINGES

## The new generation of hinges

With the introduction of the AXA Titan, a new generation of hinges is created for the professional. Thanks to the unique patented design and patented method of securing, only 3 hinges are sufficient to achieve the SKG\*\*\* certificate and resistance class 3 (WK3) and in addition to that an extremely high bearing capacity of 180 kg. In this way the AXA Titan combines safety, durability and design in one.

### Extremely high load capacity

The AXA Titan has a load capacity of 180 kg with only 3 hinges per door! Due to the double rolling of the knuckles, the Titan has a high strength in both vertical and lateral direction. If a door closer or door stopper is used and the maximum load of 180 kg is not exceeded, only 3 hinges are required.

### Highest security

The AXA Titan comprises a newly developed locking system using an integrated anti-theft hinge pin. By applying this locking system, the AXA Titan has achieved a SKG\*\*\* certification and resistance class 3 (WK3) with just three hinges per door. The hinge also meets the requirements in accordance with the Police Quality mark Safe Living.

